



GIS Connection

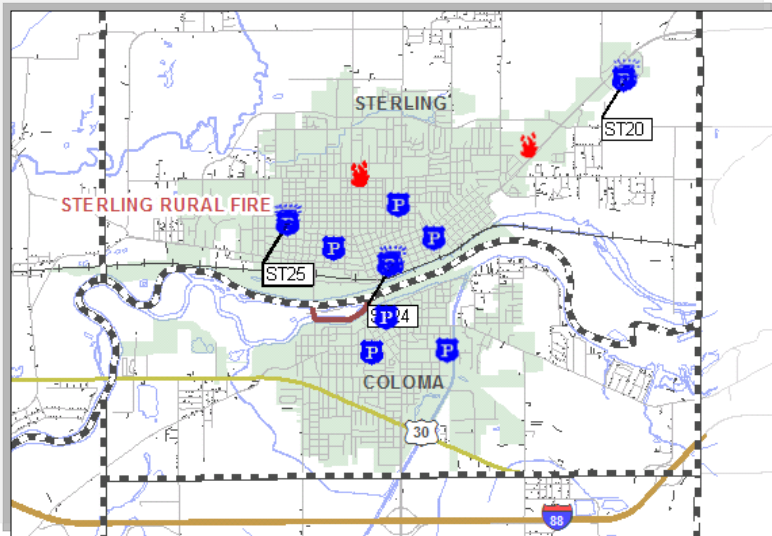
Whiteside County GIS Office

November 26, 2012

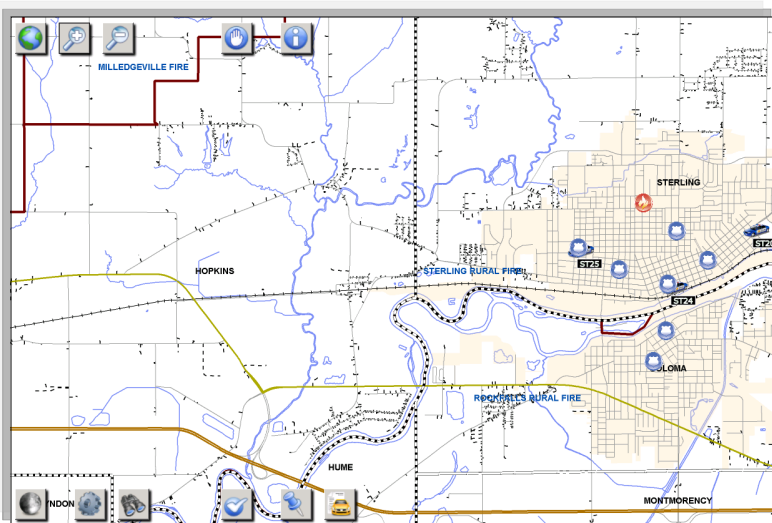
Volume 4, Issue 1

- GIS Day was November 14, 2012.
- GeoBlade is up and running on a majority of systems for E911.
- Farmland assessments were generated for the 2012 tax year utilizing the new land use layer.

GeoBlade Dispatch and Mobile Upgrades



GeoBlade Dispatch Screen Capture



GeoBlade Mobile Screen Capture

The GeoBlade upgrades to E911 mapping are now being utilized by several users. Maintenance to the GIS layers effected by the upgrades, calculating farmland assessments during the Board of Review, improving the accuracy of the layers and general maintenance have been the main projects this fall.

Beacon Website Tip



The Whiteside County Zoning layer is now available on Beacon. This only includes zoning information for those locations outside city limits.

Click the checkbox to turn the layer on. The layer is colored and labeled by each of the zoning classifications. To view more detailed descriptions of those classifications: Click on the “Legend” link at the top of the list of layers. This switches to the Legend view which displays the colors and symbols associated with each layer. The zoning layer displays the colors and descriptions of each classification. Be sure to click on the “more...” link to display all the classifications.

Please contact the Whiteside County Zoning office if you need specific requirements for each classification.

The Beacon GIS Website is located at www.beacon.schneidercorp.com.

In this issue:

GeoBlade	1
Beacon Website Tip	1
New Projects	2



Lauren Lee - GIS Coordinator
200 E. Knox St. , Room 205
Morrison, IL 61270
Tel: 815-772-5185
E-mail: llee@whiteside.org

“I have an existential map; it has ‘you are here’ written all over it.”
- Steven Wright

Our GIS Website is:
<http://www.whiteside.org/assessor/gis.html>

- All links are clickable in your PDF newsletter. If you currently receive a hard copy of the newsletter but wish to receive the emailed PDF copy, please forward your email to llee@whiteside.org.
- Maps of Superstorm Sandy's impacts: <http://bit.ly/UGzkhu>
- Want to learn more about ArcGIS? Check out: training.esri.com for some free training options.

New Projects on the Horizon

- Building Footprint layer
 - Survey Monuments
 - Encumbrances
 - ESRI Local Government Model
 - Automation with Python
- Investigating Flex



Building Footprint Layer Beginnings